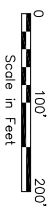


# FINAL PLAT

OF

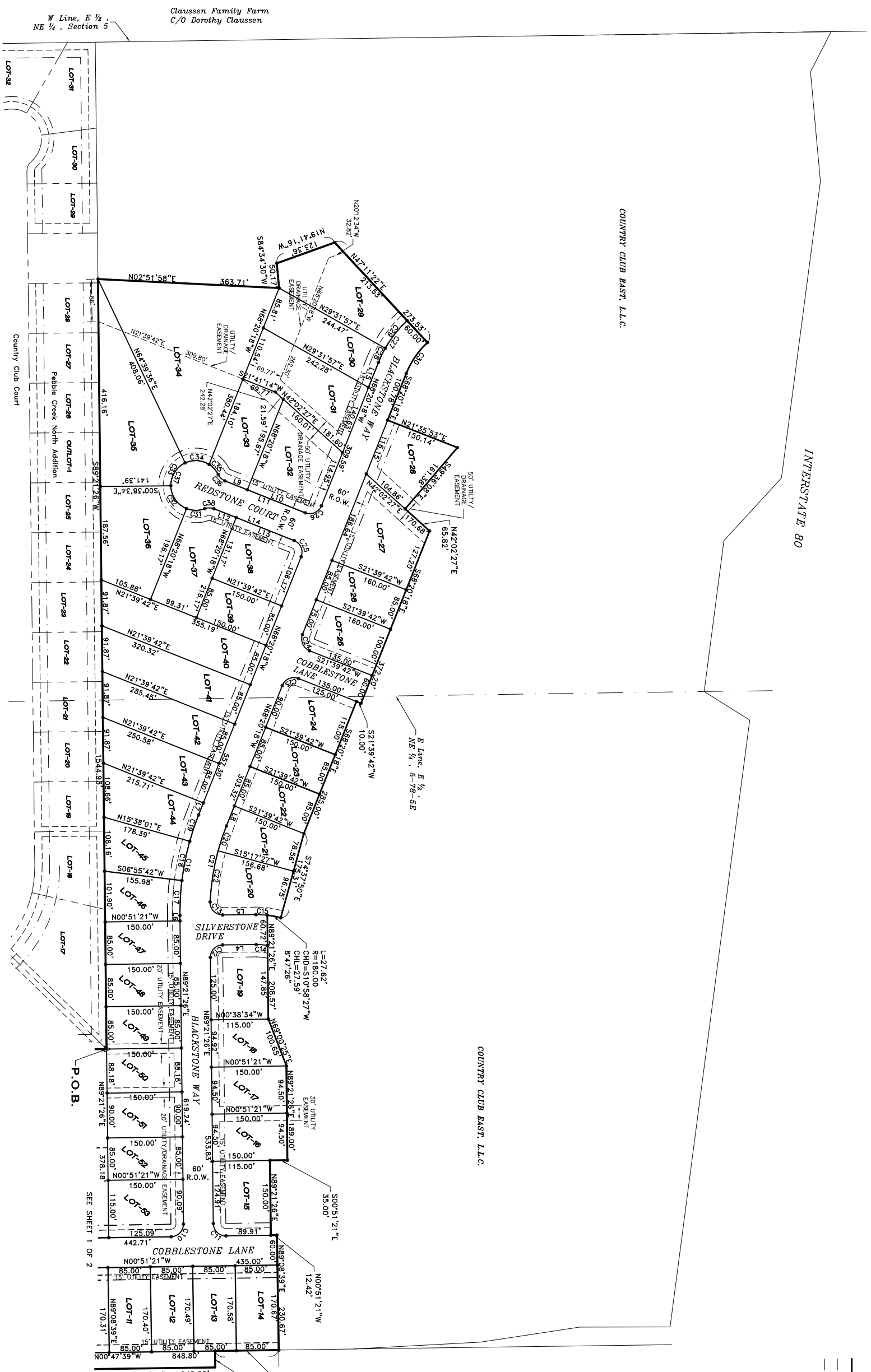
## Pebble Creek North Fifth Addition

A part of Section 4 and part of Section 5,  
Township 78 North, Range 5 East of the 5th Principal Meridian,  
City of LeClaire, County of Scott, State of Iowa.



**LEGEND**

—	MEASURED DISTANCE / BEARING
---	PLATTED DISTANCE / BEARING
■	SET CONCRETE MONUMENT
●	SET 5/8" IRON ROD #13974
▲	FOUND CAPPED IRON ROD #13974
○	FOUND 1" PIPE
◇	FOUND 5/8" IRON ROD
---	BOUNDARY OF SUBDIVISION
---	BUILDING SETBACK LINE
---	UTILITY EASEMENT



LOT	AREA	ADDRESS
1	0.332	48 COBBLESTONE LANE
2	0.333	50 COBBLESTONE LANE
3	0.333	52 COBBLESTONE LANE
4	0.333	54 COBBLESTONE LANE
5	0.393	53 COBBLESTONE LANE / 1 BLACKSTONE WAY
6	0.325	3 BLACKSTONE WAY
7	0.329	5 BLACKSTONE WAY
8	0.288	9 BLACKSTONE WAY
9	0.393	9 SILVERSTONE DRIVE
10	0.383	15 BLACKSTONE WAY / 18 SILVERSTONE DRIVE
11	0.308	17 BLACKSTONE WAY
12	0.293	19 BLACKSTONE WAY
13	0.293	21 BLACKSTONE WAY
14	0.393	23 BLACKSTONE WAY / 23 COBBLESTONE WAY / 85 COBBLESTONE LANE
15	0.364	29 BLACKSTONE WAY / 94 COBBLESTONE LANE
16	0.312	31 BLACKSTONE WAY
17	0.576	33 BLACKSTONE WAY
18	0.394	35 BLACKSTONE WAY
19	0.614	40 BLACKSTONE WAY
20	0.473	38 BLACKSTONE WAY
21	0.641	36 BLACKSTONE WAY
22	0.575	34 BLACKSTONE WAY / 2 REDSTONE COURT
23	0.409	4 REDSTONE COURT
24	1.697	6 REDSTONE COURT
25	0.882	7 REDSTONE COURT
26	0.677	5 REDSTONE COURT
27	0.480	3 REDSTONE COURT
28	0.449	32 BLACKSTONE WAY / 1 REDSTONE COURT
29	0.293	30 BLACKSTONE WAY
30	0.659	28 BLACKSTONE WAY
31	0.591	26 BLACKSTONE WAY
32	0.522	24 BLACKSTONE WAY
33	0.459	22 BLACKSTONE WAY
34	0.415	20 BLACKSTONE WAY
35	0.354	18 BLACKSTONE WAY
36	0.318	16 BLACKSTONE WAY
37	0.293	14 BLACKSTONE WAY
38	0.293	12 BLACKSTONE WAY
39	0.293	10 BLACKSTONE WAY
40	0.304	8 BLACKSTONE WAY
41	0.310	6 BLACKSTONE WAY
42	0.293	4 BLACKSTONE WAY
43	0.393	2 COBBLESTONE LANE / 43 COBBLESTONE LANE / 2 BLACKSTONE WAY

PEBBLE CREEK NORTH FIFTH ADDITION  
LECLAIRE, IOWA

REVISIONS

NO.	ITEM	DATE
1	REVISED PER CITY COMMENTS	11-23-05

PLOTTING SCALE: 1" = 100'

DRAWN BY:	BMS
CHECKED BY: <td>RJC</td>	RJC
DATE: <td>OCTOBER 2005</td>	OCTOBER 2005

**McClure ENGINEERING ASSOCIATES, INC.**  
4700 Kennedy Drive  
East Moline, Illinois 61744  
(309) 792-2350  
Copyright 2005 by McClure Engineering Associates, Inc.

FINAL PLAT  
PEBBLE CREEK NORTH FIFTH ADDITION  
LECLAIRE, IOWA

SHEET NO. 2 OF 2